

Wachet auf, ruft uns die Stimme Bwv 645

J.S.Bach

Trascr. e arr. di M.Mantovani

Comodo ♩ = 70

Sx S
mp

Sx C1
mp

Sx C2
p

Sx T1
p

Sx T2
p

Sx B
p

4

Sx S
p

Sx C1
p

Sx C2
mp

Sx.T.
mp

Sx T2

Sx.B.

2
8

Sx S

Sx C1

Sx C2

Sx.T.

Sx T2

Sx.B.

11

Sx S

Sx C1

Sx C2

Sx.T.

Sx T2

Sx.B.

tr

tr

f

f

f

mp

15

Sx S

Sx C1

Sx C2

Sx.T.

Sx T2

Sx.B.

19

Sx S

Sx C1

Sx C2

Sx.T.

Sx T2

Sx.B.

4
23

Sx S

Sx C1

Sx C2

Sx.T.

Sx T2

Sx.B.

p

mp

pp

27

Sx S

Sx C1

Sx C2

Sx.T.

Sx T2

Sx.B.

mp

mp

30

Sx S

Sx C1

Sx C2

Sx.T.

Sx T2

Sx.B.

33

Sx S

Sx C1

Sx C2

Sx.T.

Sx T2

Sx.B.

6
37

Sx S

Sx C1

Sx C2

Sx.T.

Sx T2

Sx.B.

41

Sx S

Sx C1

Sx C2

Sx.T.

Sx T2

Sx.B.

pp

pp

44

Sx S

Sx C1

Sx C2

Sx.T.

Sx T2

Sx.B.

mp

mp

7

47

Sx S

Sx C1

Sx C2

Sx.T.

Sx T2

Sx.B.

pp

pp

tr

tr

tr

8
50

Sx S *tr*

Sx C1 *tr*

Sx C2 *f*

Sx.T. *f*

Sx T2 *f*

Sx.B.

53

Sx S

Sx C1

Sx C2 *tr*

Sx.T. *tr*

Sx T2 *tr*

Sx.B.

57 9

Sx S

Sx C1

Sx C2

Sx.T.

Sx T2

Sx.B.

pp

mp

pp

60

Sx S

Sx C1

Sx C2

Sx.T.

Sx T2

Sx.B.

tr

10
63

Sx S

Sx C1

Sx C2

Sx.T.

Sx T2

Sx.B.

f

f

f

67

Sx S

Sx C1

Sx C2

Sx.T.

Sx T2

Sx.B.

tr

tr

tr

71

Sx S

Sx C1

Sx C2

Sx.T.

Sx T2

Sx.B.

pp

pp

rit.

tr

rit.

tr

rit.

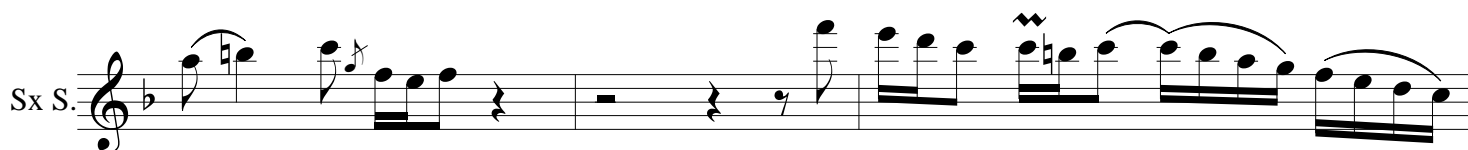
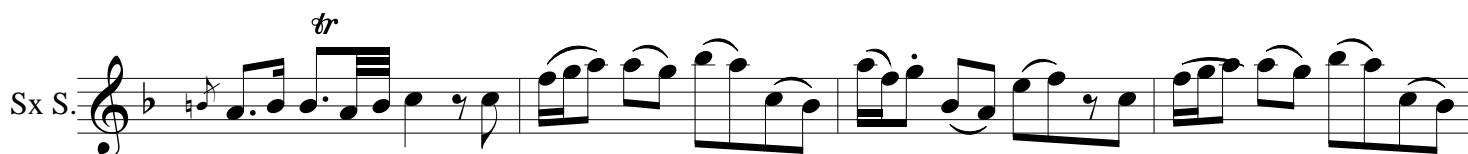
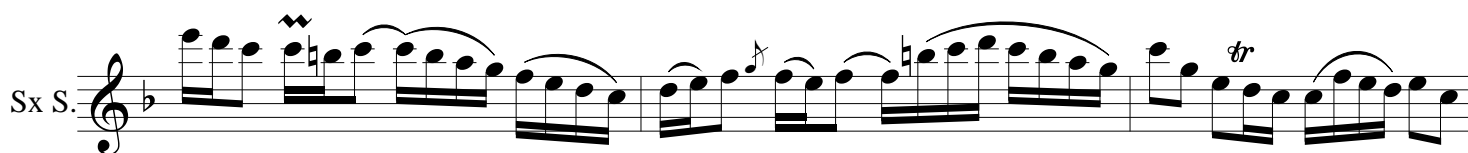
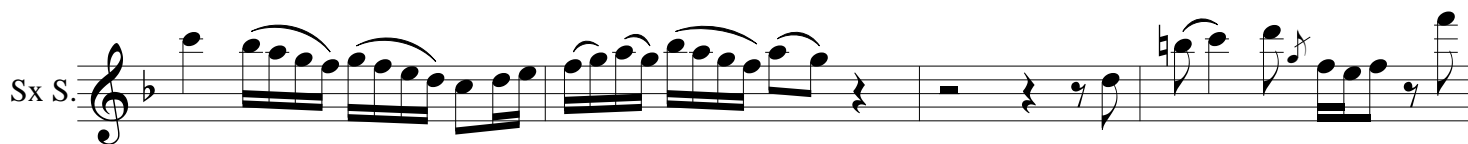
pp

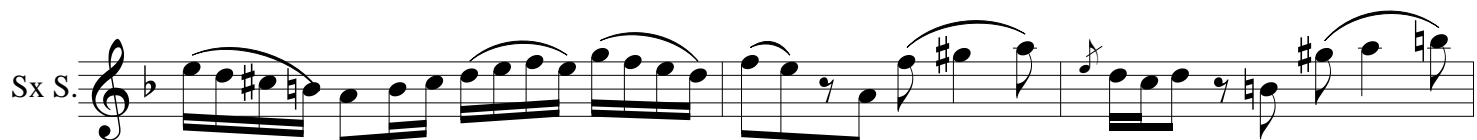
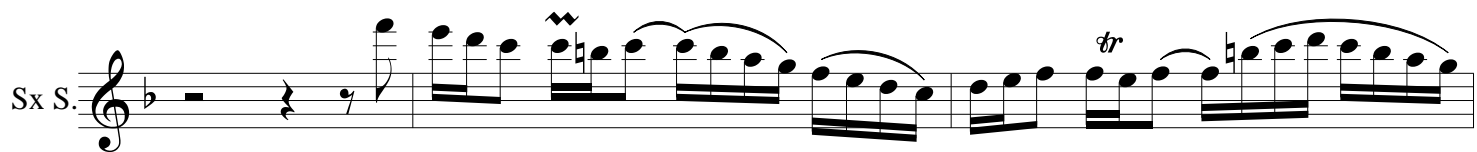
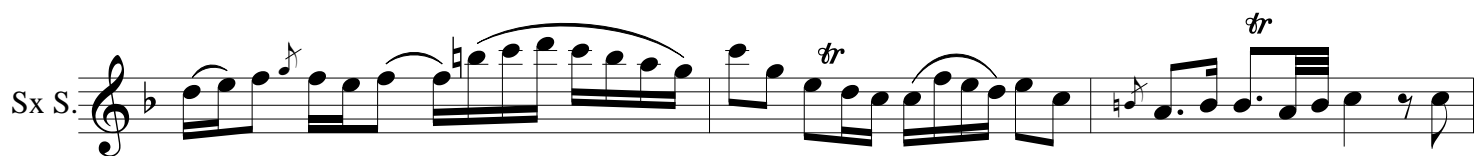
rit.

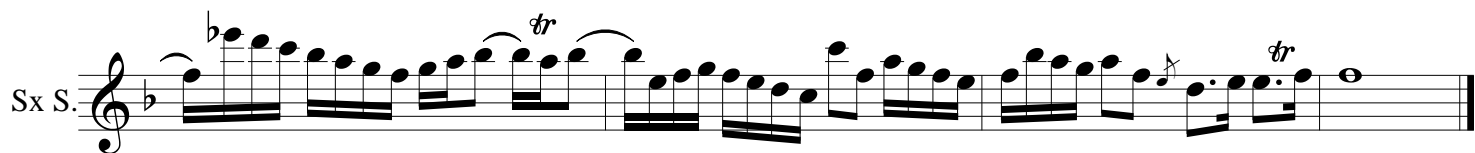
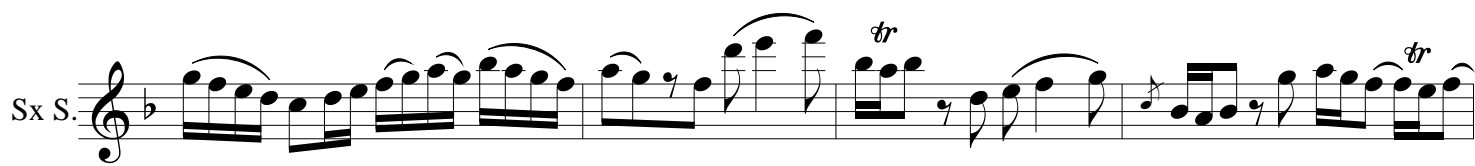
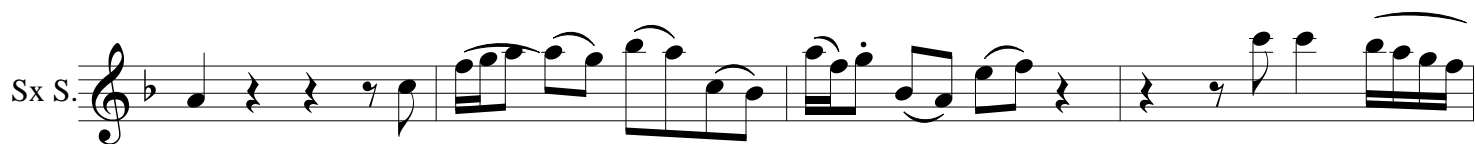
rit.

Wachet auf, ruft uns die Stimme Bwv 645

J.S.Bach
M.Mantovani

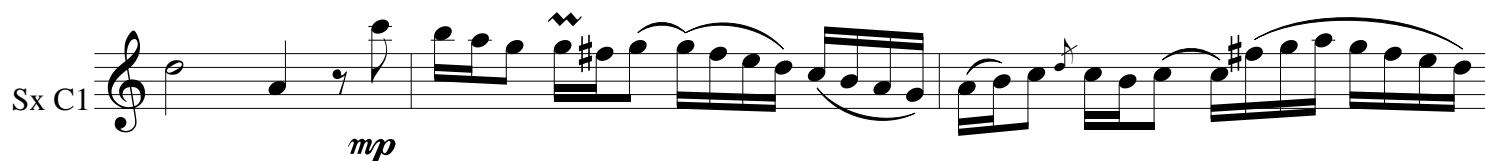
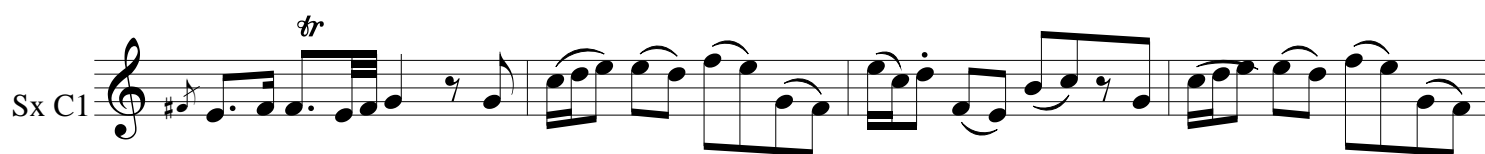
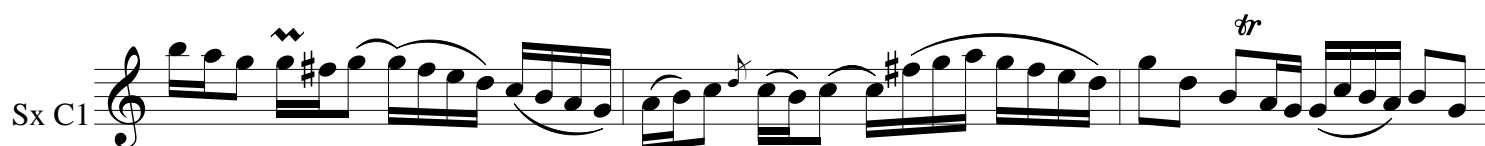






Wachet auf, ruft uns die Stimme Bwv 645

J.S.Bach
M.Mantovani



Sx C1

tr

Sx C1

Sx C1

pp *mp*

Sx C1

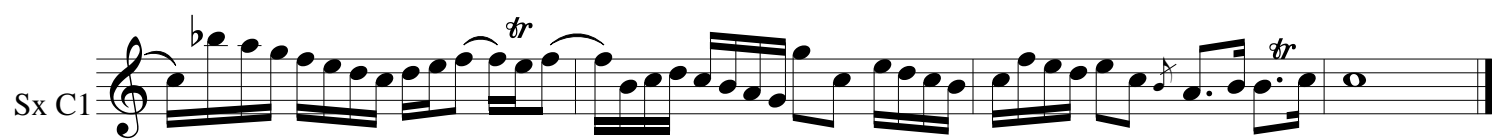
Sx C1

Sx C1

tr *tr*

Sx C1

tr *tr*



Wachet auf, ruft uns die Stimme Bwv 645

J.S.Bach
M.Mantovani

Sx C2

p

Sx C2

mp *f* 5

Sx C2

tr

Sx C2

p

Sx C2

mp *pp* 2

Sx C2

f

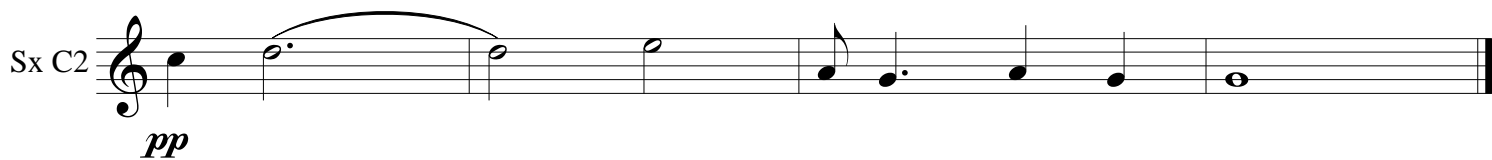
Sx C2

tr

Sx C2

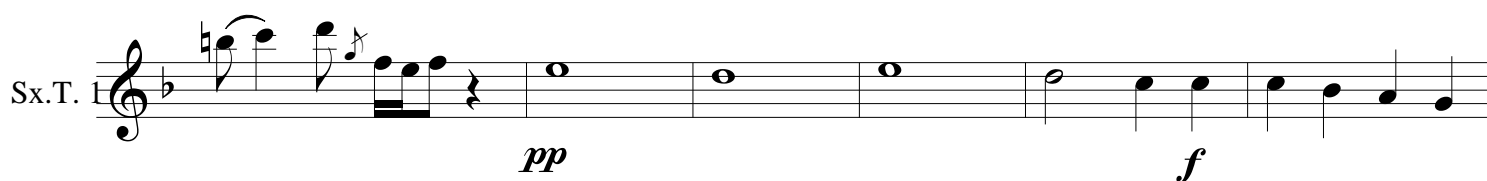
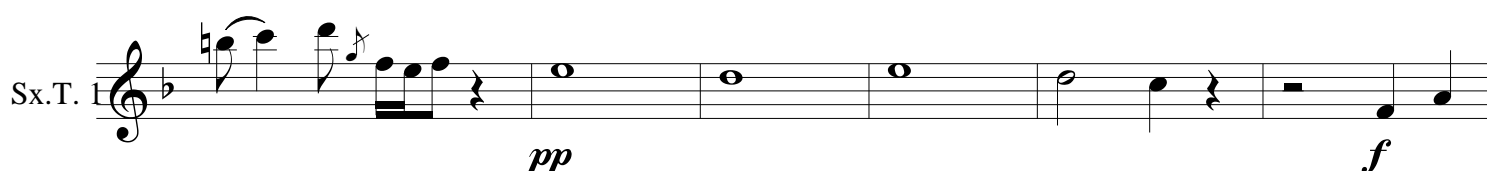
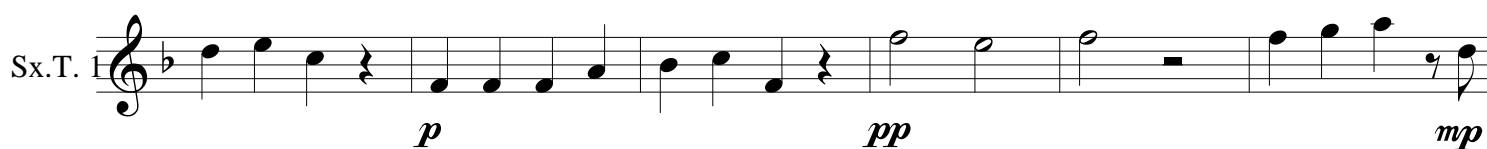
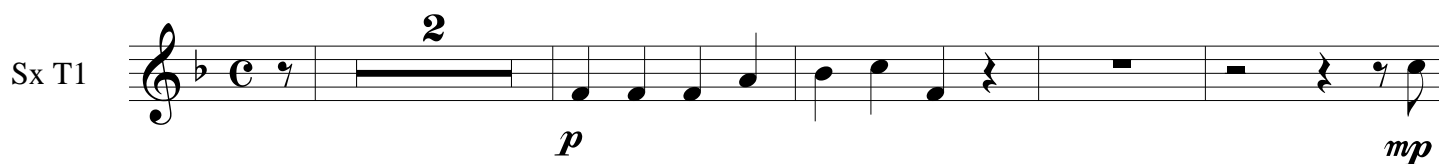
mp *pp* *f*

Detailed description: This image shows a musical score for Saxophone C2, consisting of eight staves of music. The score is for the piece 'Wachet auf, ruft uns die Stimme' by J.S. Bach, arranged by M. Mantovani. The music is in common time (C) and features a variety of dynamics and articulations. The first staff (measures 1-8) starts with a piano (*p*) dynamic. The second staff (measures 9-16) includes mezzo-piano (*mp*) and forte (*f*) dynamics, with a fingering of 5 indicated. The third staff (measures 17-24) features a trill (*tr*). The fourth staff (measures 25-32) returns to piano (*p*). The fifth staff (measures 33-40) includes mezzo-piano (*mp*) and pianissimo (*pp*) dynamics, with a fingering of 2 indicated. The sixth staff (measures 41-48) features forte (*f*). The seventh staff (measures 49-56) includes a trill (*tr*). The eighth staff (measures 57-64) includes mezzo-piano (*mp*), pianissimo (*pp*), and forte (*f*) dynamics.



Wachet auf, ruft uns die Stimme Bwv 645

J.S.Bach
M.Mantovani



Sx.T. 1

tr 5

Detailed description: This staff contains measures 1 through 7. Measure 1 has a whole rest. Measure 2 has a quarter rest followed by four eighth notes (Bb, B, C, B). Measure 3 has a quarter note Bb, a quarter note B, and a half note A. Measure 4 has a whole rest. Measure 5 has a quarter note Bb, a quarter note B, and a half note A. Measure 6 has a quarter note B and a half rest. Measure 7 has a whole note G.

Sx.T. 1

f

Detailed description: This staff contains measures 8 through 14. Measure 8 has a quarter rest followed by four eighth notes (Bb, B, C, B). Measure 9 has a half note B and a whole rest. Measure 10 has a whole rest. Measure 11 has a quarter rest followed by two eighth notes (B, A). Measure 12 has a quarter note B and a half note A. Measure 13 has a whole rest. Measure 14 has a quarter rest followed by four eighth notes (Bb, B, C, B).

Sx.T. 1

2 pp

Detailed description: This staff contains measures 15 through 21. Measure 15 has a quarter note Bb, a quarter note B, and an eighth note A. Measure 16 has a quarter note B and a half note A. Measure 17 has a whole note B. Measure 18 has a whole rest. Measure 19 has a whole rest. Measure 20 has a quarter rest followed by an eighth note B, then eighth notes A, G, F, E. Measure 21 has a whole note B.

Wachet auf, ruft uns die Stimme Bwv 645

J.S.Bach
M.Mantovani

Sx T2

p

Sx T2

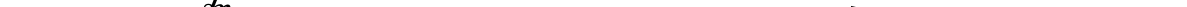


A musical staff in treble clef with a key signature of one flat (Bb). The melody consists of quarter and eighth notes, with some measures containing beamed eighth notes. The staff is labeled 'Sx T2' on the left.

Sx T2



A musical staff for a single instrument, labeled 'Sx T2'. The staff is in treble clef with a key signature of one flat (B-flat). The melody begins with a quarter note G4, followed by a quarter note A4, and a quarter note Bb4. This is followed by a quarter rest, then a half note G4, and a half note A4. The next measure contains four eighth notes: G4, A4, Bb4, and A4. This is followed by a half note G4 and a half note F4. The final measure consists of a quarter rest, followed by a quarter note G4, a quarter note A4, and a quarter note Bb4. A dynamic marking of *f* (forte) is placed below the first half note G4 in the third measure.

Sx T2  Musical notation for Sx T2, featuring a treble clef, a key signature of one flat (Bb), and a 4/4 time signature. The melody starts with a quarter note G4, followed by a quarter note A4, then a quarter note Bb4. A trill (tr) is indicated over the Bb4 note, which is followed by a quarter note A4. The melody then has a whole rest, followed by a quarter note G4, a quarter note F4, and a quarter note E4. The melody continues with a quarter note D4, a quarter note C4, and a quarter note Bb3. The melody ends with a quarter note A3, a quarter note G3, and a quarter note F3. The notation is marked with 'pp' (pianissimo) at the end.

Sx T2

The musical notation for Sx T2 is written on a treble clef staff with a key signature of one flat (B-flat). It begins with a 2-measure rest, indicated by a '2' above a horizontal bar. The melody then proceeds with the following notes: a quarter note G4, a quarter note A4, a quarter note B4, a half note C5, a quarter note B4, a quarter note A4, a half note G4, and a quarter note F4.

Sx T2



A musical staff in treble clef with a key signature of one flat (Bb). The notation consists of the following notes and rests: a whole note Bb, a quarter note D, a quarter note E, a quarter note F, a quarter rest, a whole rest, a quarter note G, a quarter note A, a quarter note Bb, a quarter note Bb, a half note C, a half note C, a whole rest, a quarter rest, and a quarter note D. A dynamic marking of *f* (forte) is placed below the staff between the whole rest and the quarter note G.

Sx T2



A musical staff in treble clef with a key signature of one flat (Bb). The notation includes eighth notes, quarter notes, and a triplet of eighth notes marked with a 'tr' symbol. The staff contains 12 measures of music.

Sx T2

pp

Detailed description: This block shows the musical notation for the first ten measures of the 'Sx T2' part. The notation is on a single staff with a treble clef and a key signature of one flat (B-flat). The notes are: Measure 1: quarter note B-flat; Measure 2: quarter note D; Measure 3: quarter note D; Measure 4: quarter note B-flat; Measure 5: quarter note A; Measure 6: half note G; Measure 7: half note F; Measure 8: half note E; Measure 9: quarter note D; Measure 10: quarter note C. The dynamic marking 'pp' is placed below the first measure.

Sx T2

f *tr*

Sx T2

pp

Sx T2

f

Sx T2

pp

Sx T2

Wachet auf, ruft uns die Stimme Bwv 645

J.S.Bach
M.Mantovani

